

**VARIANCES:**

1 **PARKING DENSITY:**  
 PROVIDING 50 SPACES TO A DENSITY OF 1 SPACE PER UNIT  
 IN LIEU OF 1.5 SPACE PER UNIT.

2 **BUILDING SETBACK:**  
 ZERO FOOT SETBACK AT LIVINGSTON AVE.

TOULA  
 MANAGEMENT  
 LLC  
 GERMAN VILLAGE, OH

© 2018 BY:  
 BERARDI + PARTNERS, INC.  
 ARCHITECTS AND  
 ENGINEERS  
 ALL RIGHTS RESERVED  
 THE ARRANGEMENTS DEPICTED HEREIN ARE THE SOLE  
 PROPERTY OF BERARDI + PARTNERS, INC.  
 ARCHITECTS AND ENGINEERS AND MAY NOT BE  
 REPRODUCED WITHOUT ITS WRITTEN PERMISSION

**DEVELOPMENT SUMMARY**

EXIST. BUILDINGS:  
 12 UNITS  
 NEW BUILDINGS:  
 38 UNITS  
**TOTAL:**  
 50 UNITS TOTAL  
 PROVIDED PARKING:  
 50 SPACES  
 (1.0 SPACES/UNIT)

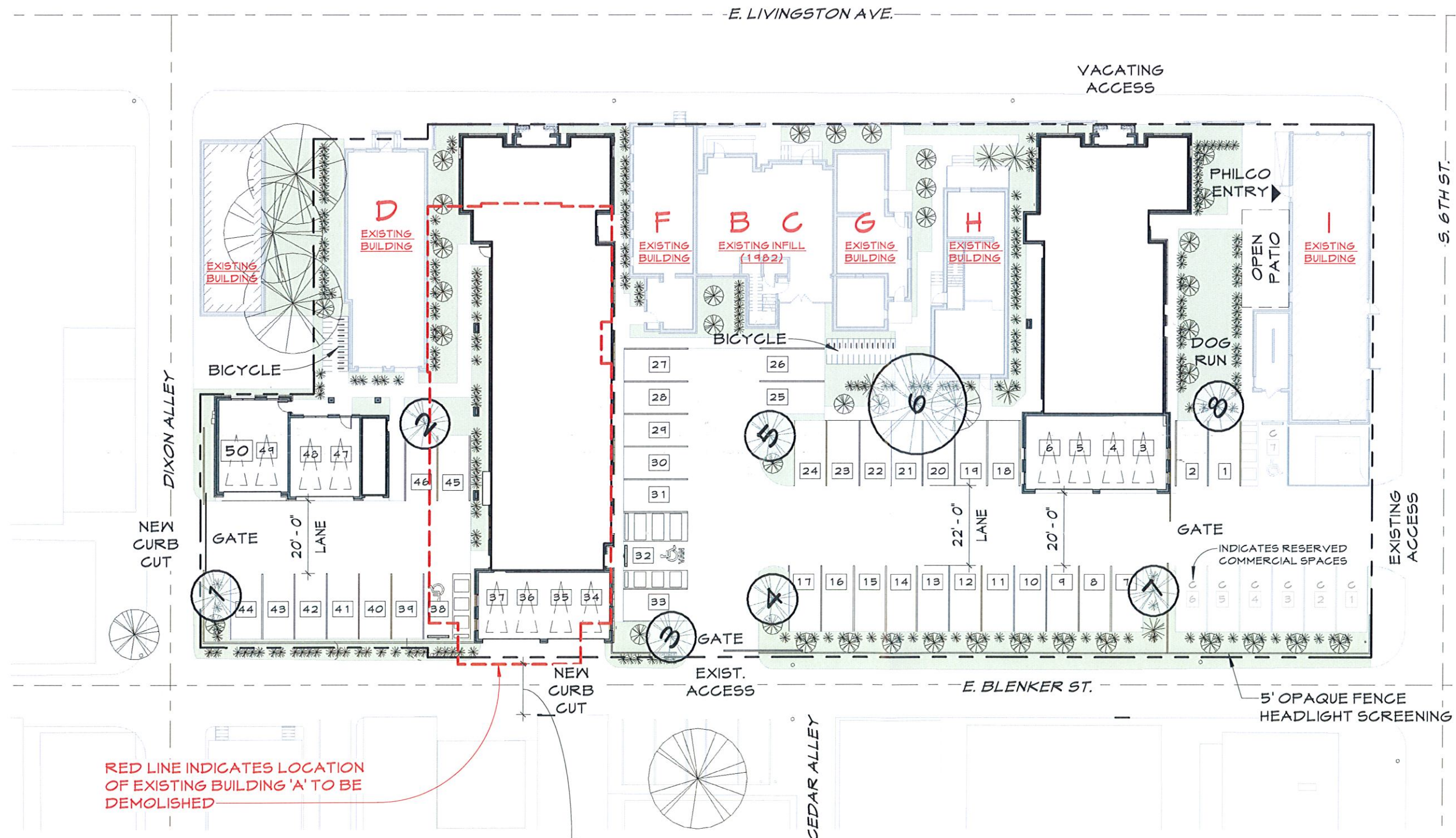
**SCHEMATIC**

DATE: 04/23/2019  
 PROJECT #: 19108

**PRELIMINARY  
 SITE PLAN**

**A1.0c**

**BERARDI+**  
 ARCHITECTURE | INTERIOR DESIGN | ENGINEERING  
 1398 GOODALE BOULEVARD, COLUMBUS, OH 43212  
 P 614.221.1110 berardipartners.com



RED LINE INDICATES LOCATION  
 OF EXISTING BUILDING 'A' TO BE  
 DEMOLISHED

CURRENT WIDTH AT EXIST.  
 BUILDING 'A', APPROX. 14'-0"

PRELIMINARY 1ST FLOOR 1" = 30'-0"